

Owner's Manual

Odyssey Compact Dryer 205



Table of Contents



I. Introduction	3
II. Parts for Assembly	4
III. Safety Procedures	5
IV. Assembly	
Step 1: Building the Legs and Attaching the Base	6
Step 2: Attaching the Infeed	8
Step 3: Attaching the Outfeed	9
Step 4: Installing the Belt	10
Step 5: Adjusting the Belt Tracking System	11
Step 6: Tightening the Arms and Installing Heat Shields	12
V. Controls	13
VI. Parts List	14
VII. Limited Warranty	15



Congratulations on your purchase of the Odyssey Compact Dryer.

Check the crate for damages. DO NOT accept the crate if there are any damages caused by improper handling during shipping. Immediately report any damages to the carrier and contact Workhorse Products at, 800-778-8779.

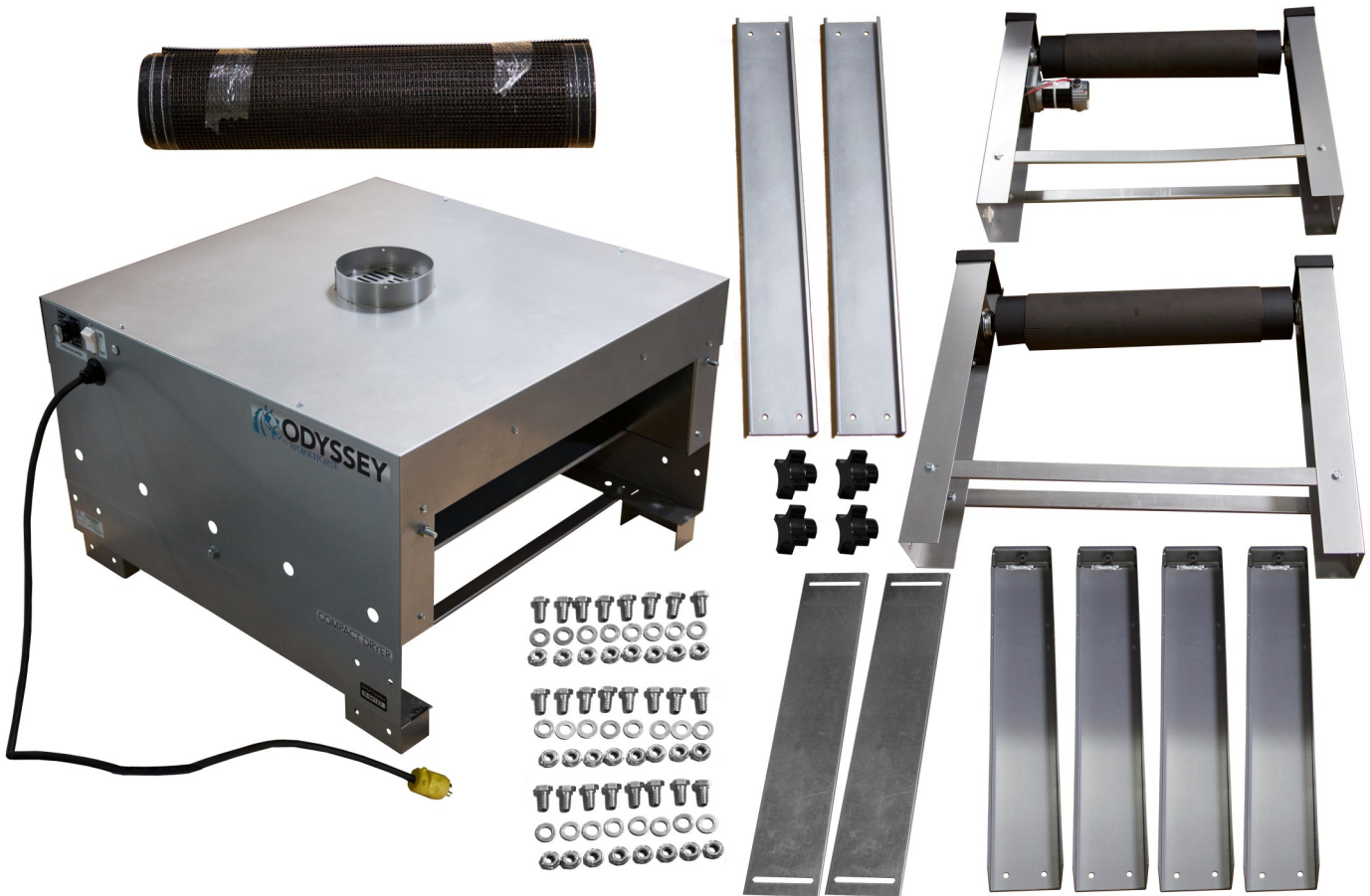
Be sure to inspect the crate contents IMMEDIATELY, while the carrier is still present. Even though our packaging has been designed to handle normal shipping conditions, we cannot foresee damages done by the carrier. We will not be responsible for damages that occur during transportation.

If there are damages immediately notify the driver, file a claim with the carrier and call Workhorse Products.

The Importance of the Owner's Manual:

The purpose of the Owner's Manual is to familiarize you with the parts and operations of the Odyssey Compact Dryer. There are step-by-step instructions to assemble the product, explanations of the product's key features, and additional information that will help with the maintenance of the product.

Parts for Assembly



QTY	Description	Part Number	QTY	Description	Part Number
1	Dryer Body	Pre-Assembled	2	Cross Brace	80130
1	Belt	60186	2	Belt Roller Assemblies	Pre-Assembled
24	Washers	43-FLT-M10-10	4	Leg	85179
24	Flanged Lock Nut	42-FLG-375-10	1	Power Cord (115V)	390663
4	Leg Leveling Bolt	41-HB-375-50	24	Hex Bolt (3/8-16" x 3/4")	41-HB-375-30
4	Black Knobs	74013	2	Heat Panels	80127
1	Element	20602R			

WARNING!

RISK OF ELECTRICAL SHOCK! Turn ALL power to unit OFF before service.

All service should be done by or under the supervision of a trained technician

1. For your safety, do not store or use gasoline or other flammable vapors and liquids in the vicinity (at least 3' (1 Meter)) of this or any other appliance.
 2. Vent lines to the outdoors must be installed by a qualified HVAC engineer on all air exhaust and gas line components equipped with a vent fitting.
 3. Proper grounding (a ground rod at the equipment footing), according to NEC requirements, must be provided for during electrical connection by a **QUALIFIED ELECTRICIAN**.
 4. Never alter the internal wiring of this machine.
 5. Never place any item other than the stock to be cured or dried on this dryer's conveyor belt. Do not overload the belt.
 6. Do not let the conveyor belt track off the conveyor drive rollers.
 7. Keep all loose articles (including clothing, hair, jewelry, etc.) away from the conveyor belt.
 8. Never leave the machine unattended when it is operating.
 9. Do not perform maintenance on this machine until all power has been shut off at the dryer **AND** at the incoming power circuit breaker.
-

THIS ELECTRIC DRYER IS INTENDED SOLELY FOR THE PURPOSE OF CURING INK ON TEXTILE AND CUT GOODS. THIS DRYER IS NOT INTENDED FOR USE IN HEATING, CURING OR BAKING OF ANY OTHER MATERIALS.

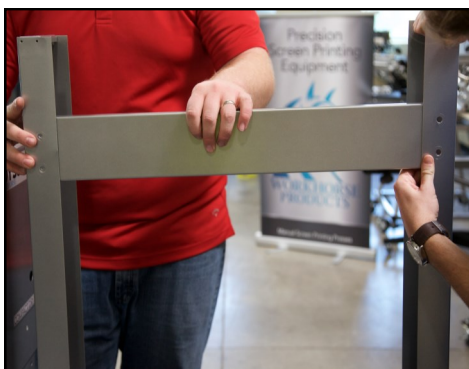
THIS DRYER IS INTENDED FOR INDOOR USE ONLY



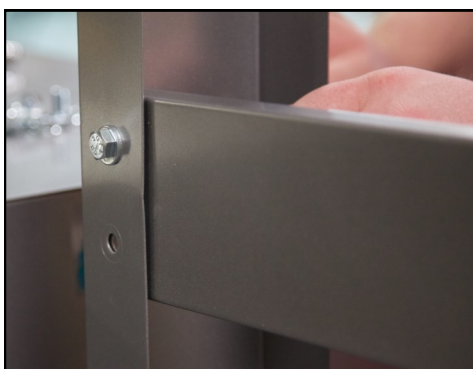
THE EXCLAMATION WITHIN AN EQUILATERAL TRIANGLE SYMBOL IS INTENDED TO ALERT THE USER OF IMPORTANT SAFETY PRECAUTIONS TO BE AWARE OF DURING OPERATION.

Step 1: Building the Legs and Attaching the Base

Tools needed:	Parts needed:	
• 9/16" Socket Wrench	• 4 x Legs & Levelers • Base • 2 x Cross Braces	• 16 x Lock Nuts • 16 x Washers • 2 x Cross Braces • 16 x Hex Bolts



1. Align the holes of the cross base with the holes on the bottom of two legs. The backside of the cross brace should face out, and the inside of the brace should face in.



2. Insert a washer and a hex bolt (3/8-16" x 3/4") into the top holes. Hand tighten a lock nut onto the other side of the bolt.



3. Insert washers and hex bolts into the two holes for both legs. Hand tighten lock nuts onto the backside of every bolt.



4. Place the legs and attached cross brace onto the floor.



5. Repeat steps 1-4 to build the other two legs and cross brace. These are the legs that the body of the dryer will attached to.

Step 1 (Continued): Attaching the Base



6. Set the legs up so the outsides of the cross braces are facing out. Using two people, lift the dryer body and insert the bottom corner slots into the legs.



7. With the holes of the base and the leg aligned, insert a washer and a hex bolt into the outer hole.



8. Tighten a lock nut onto the other side of the bolt, which faces inside the dryer. Only hand tighten it.



9. Repeat steps 7-8 with the rest of the holes, there are eight in total.

10. After all eight holes have been installed, tighten each one with a 9/16" socket wrench. The legs and base are now installed. Be sure not to tighten too much, because they may need to be looser to fit the arms onto the base. After both arms are installed onto the base, then fully tighten the upper leg bolts.



Step 2: Attaching the Infeed

Tools needed:

- 9/16" Wrench
- 9/16" Socket

Parts needed:

- Infeed Arm
 - 4 x Hex Bolts
 - 4 x Flat washers
 - 4 x Lock Nuts
-



1. The side without the wire is the side that the infeed is installed into. Slide the arms (without the motor) into the base, while aligning the holes of the arm and the base.



2. Insert a washer and hex bolt into one of the holes that connect the base and the arm.



3. Thread a lock nut onto the other side of the bolt, which is located inside of the dryer. Repeat steps 2-3 to install the other three holes.



4. Using a wrench for the inside nut and a socket for the outside bolt, tighten the nut and bolt to hold in place. Tighten the other three bolts and nuts, leaving them loose enough to adjust for leveling.

Step 3: Attaching the Outfeed

Parts needed:

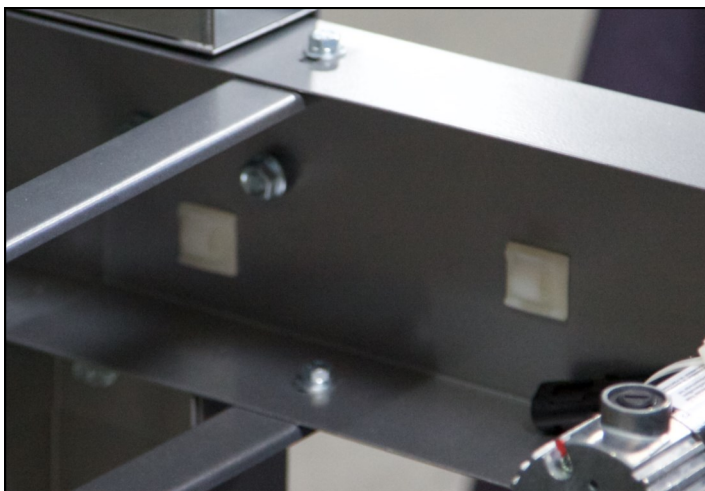
- Outfeed Arm
- 4 x Flat Washers
- 4 x Hex Bolts
- 4 x Lock Nuts



1. The side with the wire is the side that the outfeed is installed into. Slide the arms (with the motor) into the base, while aligning the holes of the arm and the base.



2. Insert a washer and hex bolt into one of the holes that connect the base and the arm.



3. Thread a lock nut onto the other side of the bolt, which is located inside of the dryer. Repeat steps 2-3 to install the other three holes. Do not tighten the nuts and bolts with wrenches until the belt is installed.

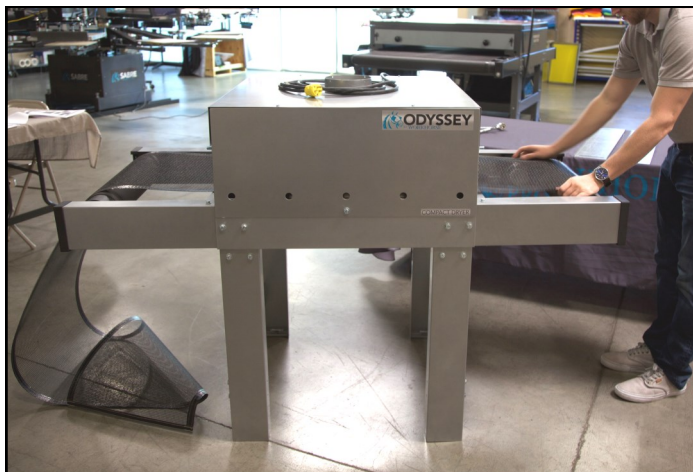


4. Connect the plug located inside of the machine to the plug attached to the motor located on the arm.

Step 4: Installing the Belt

Parts needed:

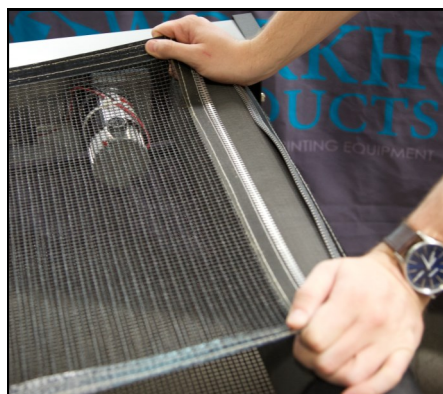
- Belt
- Fastening Pin



1. Thread the belt over the top of the infeed roller and over the upper cross brace. After the belt has gone through the chamber, pull the belt to hang over the outfeed roller to add weight to help with the threading of the lower portion.



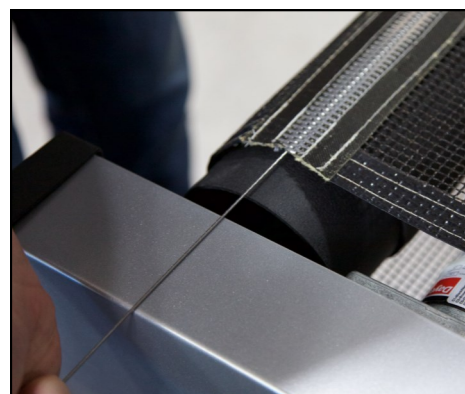
2. On the infeed side, take the other end of the belt and thread it under the infeed roller and under the lower cross brace, through the lower slot on the roller/rail assembly. Guide the belt through the oven chamber so it continues through the lower slot and over the lower cross brace.



3. Thread the belt until both ends meet on the outfeed roller.



4. To install the belt it may be required to adjust the belt tracking. This is done by turning the tension bolt clockwise (to tighten) or counterclockwise (to loosen). Belt tracking will be explained more in-depth on page 11.

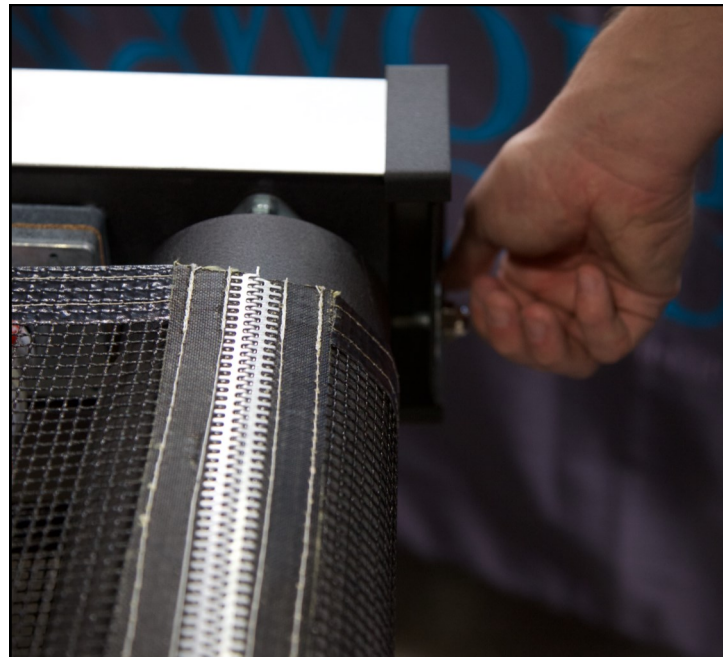


5. Align the belt closure until the teeth mesh connect, and install the fastening pin into the teeth. Hold together the teeth while installing the pin. When it's inserted and the belt is fully installed, trim any extra pin that may be jutting from the sides.

Step 5: Adjusting the Belt Tracking System

Tools Needed:

- Crescent Wrench



After the belt is centered on the rubber portion of the rollers, evenly adjust the tension bolts on every corner of the dryer to tighten the belt until it can be deflected by about 2 inches. Turn the dryer on and set the belt speed to 35%, as the belt moves make small adjustments to maintain the belt to be in the center of the rollers. Turn the tension bolts clockwise to tighten the belt in that corner, or turn the bolt counter-clockwise to loosen the belt in that corner.

- If the belt is tracking to the right, turn the tension bolt clockwise in 1/4 increments.
- If the belt is tracking to the left, turn the tension bolt counter-clockwise in 1/4 increments.
- Continue using the right and left tension bolts until the belt is centered.

Adjusting the belt to be centered is critical to prevent premature wear of the motor and the belt. In cases where too much belt tracking has caused the belt to become too tense, it is necessary to reset the tension bolts and start over. **DO NOT OVER TENSION THE BELT.**

Step 6: Tightening the Arms and Installing the Heat Shields

Tools Needed:

- 9/16" Wrench
- 9/16" Socket

Parts Needed:

- 2 x Heat Panels
 - 4 x Black Knobs
-

1. Now that the belt is fully installed the bolts on the side of the base and arms can be tightened. Use a 9/16" wrench for the inside nut and a 9/16" socket on the outside bolt to tighten. The reason for waiting to tighten this arm is because the tension would make it difficult to install, track the belt, and level the arms.



2. Install a heat shield onto the two bolts that are extruding from the base. Screw on two black knobs onto the two exposed bolts. Repeat for the other side.

Congratulations! The Odyssey Conveyor Dryer is now fully assembled.



Controls



To safely connect the dryer to electricity, make sure the dryer is OFF and plug the unit in.

To start the dryer, set the belt speed to about 35% and press ON. The indicator light will illuminate, the belt will begin turning and the elements will heat up.



Adjust the heating shields by loosening the knobs and positioning the door into the desired position. Do not lower the shields too much because they can trap the substrate in the heated chamber.

The doors will become hot when the dryer is turned on, so use heavy gloves to adjust during operation.



Test the first dried garment with a non-contact infrared digital thermometer. Adjust the belt speed to achieve the desired ink curing temperature.

Workhorse Products carries a non-contact infrared digital thermometer to accurately measure surface temperature. Call customer service for price and availability!

Parts List



Part Number	Description
76003	Power Switch
76194	Speed Control Board
76198	Speed Control Resistor
390978	Speed Control Potentiometer
76195	Speed Control Knob
31-76004	Fan 115V
76005	Fan 230V
20602R	Heating Element 115V
20603R	Heating Element 230V
390981	Belt Drive Motor

For more extensive parts and trouble shooting help with ANY Workhorse Product please visit our on-line Parts store and

Support Center at:

<http://support.workhorseproducts.com/store/>

Limited Warranty



Although every effort has been made to provide accurate specifications, Workhorse Products does not assume any liability for damages, whether consequential or incidental, that may result from the use or misuse of the indicated specifications. Workhorse Products requires the use of a licensed industrial electrician for the installation of electrical service to equipment requiring electrical power.

Workhorse Products reserves the right to alter specifications in the manufacture of its products. It is understood and agreed that Seller's liability for any equipment whether liability in contract, in tort, under any warranty, in negligence, in strict liability or otherwise shall not exceed the return of the amount of the purchase price paid by Buyer. Notwithstanding the foregoing provision, under no circumstances shall Seller be liable for special, indirect or consequential damages. The price stated for the equipment is a consideration in limiting Seller's liability. No action regardless of form, arising out of the transactions under this Agreement may be brought by Buyer more than one (1) year after the cause of action has occurred. Our warranty is specified is exclusive and no other warranty, whether written or oral, is expressed or implied. Workhorse Products specifically disclaims the implied warranties of merchantability and fitness for a particular purpose. Equipment manufactured or sold by Workhorse Products is warranted against defects in workmanship and materials for a period of one year from receipt by customer. All warranties initiate from date of shipment to original customer. Replacement parts are covered for the term of the equipment warranty period. Parts not under warranty are covered for thirty (30) days from receipt by customer. Any part found by Workhorse Products to be defective in material or workmanship within the stated warranty period will be replaced or repaired at Workhorse's option without charge.

AFTER OBTAINING AN RMA# SEND RETURNED FREIGHT PREPAID TO 3730 E. Southern Avenue, PHOENIX, AZ 85040 USA.

Written authorization must be obtained from Workhorse before any part will be accepted. Replacement parts are sent out freight collect.

Parts sent out prior to receiving defective require a credit card hold for cost plus freight. Upon return of defective part, if it is deemed that the part was not damaged by customer but failed, the cost of the replacement part will be refunded.

This warranty does not extend to expendable parts such as filters, fuses, elements and brushes. Workhorse does not warrant failure of parts or components resulting from misuse or lack of proper maintenance. Installation, inspection, and

Registration Form	
Company Name: _____	Contact Name: _____
Address: _____ _____	Phone Number: _____
City: _____	Fax Number: _____
State: _____	Email : _____
Country: _____	Cell Number: _____
Zip Code: _____	Serial Number: _____
Model Number: _____	Date Recivied: _____
Date Purchased _____	

Please Fax Registration Form for warranty to take place